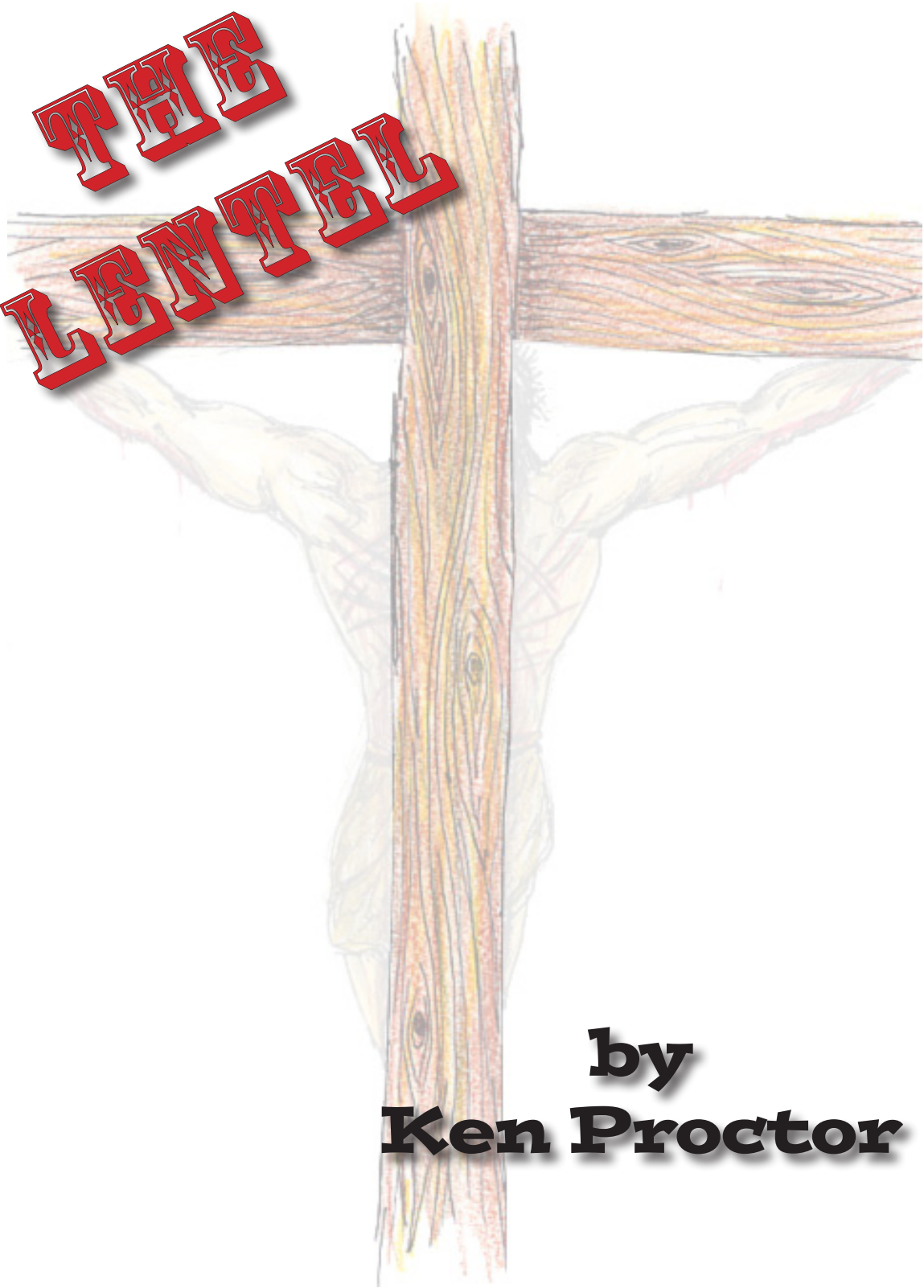


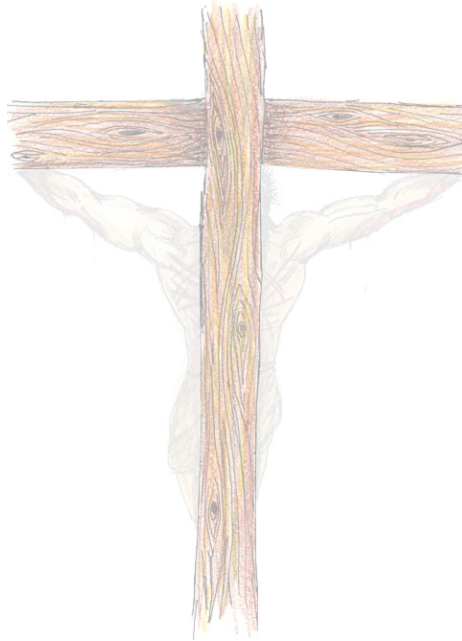
# THE LENTEN



by  
**Ken Proctor**

# The Lintel

By Ken Proctor



Rough cut and quickly

hand hewn

A common timber reduced

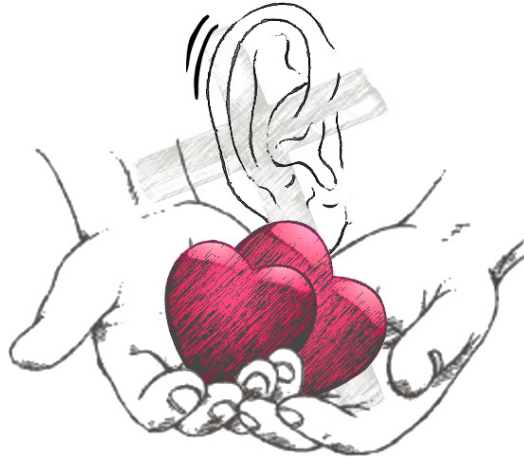
By adz and ax

to a baser purpose.

# The Lintel

By Ken Proctor

Published by SpiritDrivenLeadership.com



Spirit Driven Leadership is a project of Ministry Management Seminars

The Lintel © Ken Proctor All rights reserved. No part of this book may be reproduced in any form or by an electronic or mechanical means, including information storage and retrieval systems, without permission in writing from the publisher and or author, except by a reviewer, who may quote brief passages in a review. Published by Spirit Driven Leadership, a project of Ministry Management Seminars.

©2013 *Spirit Driven Leadership project of Ministry Management Seminars*  
1400 NE 136th Ave. Suite 201 • Vancouver, WA 98684 • U.S.A. • +1-360-356-3784

# The Lintel

By Ken Proctor

Rough cut and quickly

hand hewn

A common timber reduced

By adz and ax

to a baser purpose.

For want of timber,

oft used and well worn,

Deeply pierced and darkly stained

Many men bore its weight

and many borne aloft thereon,

But only once pierced by choice,

and only once in proxy.

Dropped, stacked,

sun checked and nail split,

eventually burned

to warm the few who watch

and who wait...

Is become the lintel of the house of God.